

### TEMPLATE KEY:

Art files should be submitted in CMYK with optional PMS colors.

Look on the "Layers" Panel to build your brochure correctly:

**n Template/Dieline** (build and orientation of brochure)

Includes cuts and score area. Outer edges and screen will be cut, inner will be scored.

**n Bleed** (extra artwork overlay for cutting to edge)

3.175mm / .125in bleed required around all edges with ink.

**n Type Safety** (build within space of boxes)

3.175mm / .125in to 6.35mm / .25in recommended type-safety area to insure content does not get damaged.

**n No Ink** (found on the template/dieline layer)

No artwork in this area.

**Artwork** (for designer to place client artwork)

**Spot UV** (optional vector overlay layer)

**Foil** (optional vector overlay layer)

**Emboss** (optional vector overlay layer)

**Deboss** (optional vector overlay layer)

### FINAL FILES:

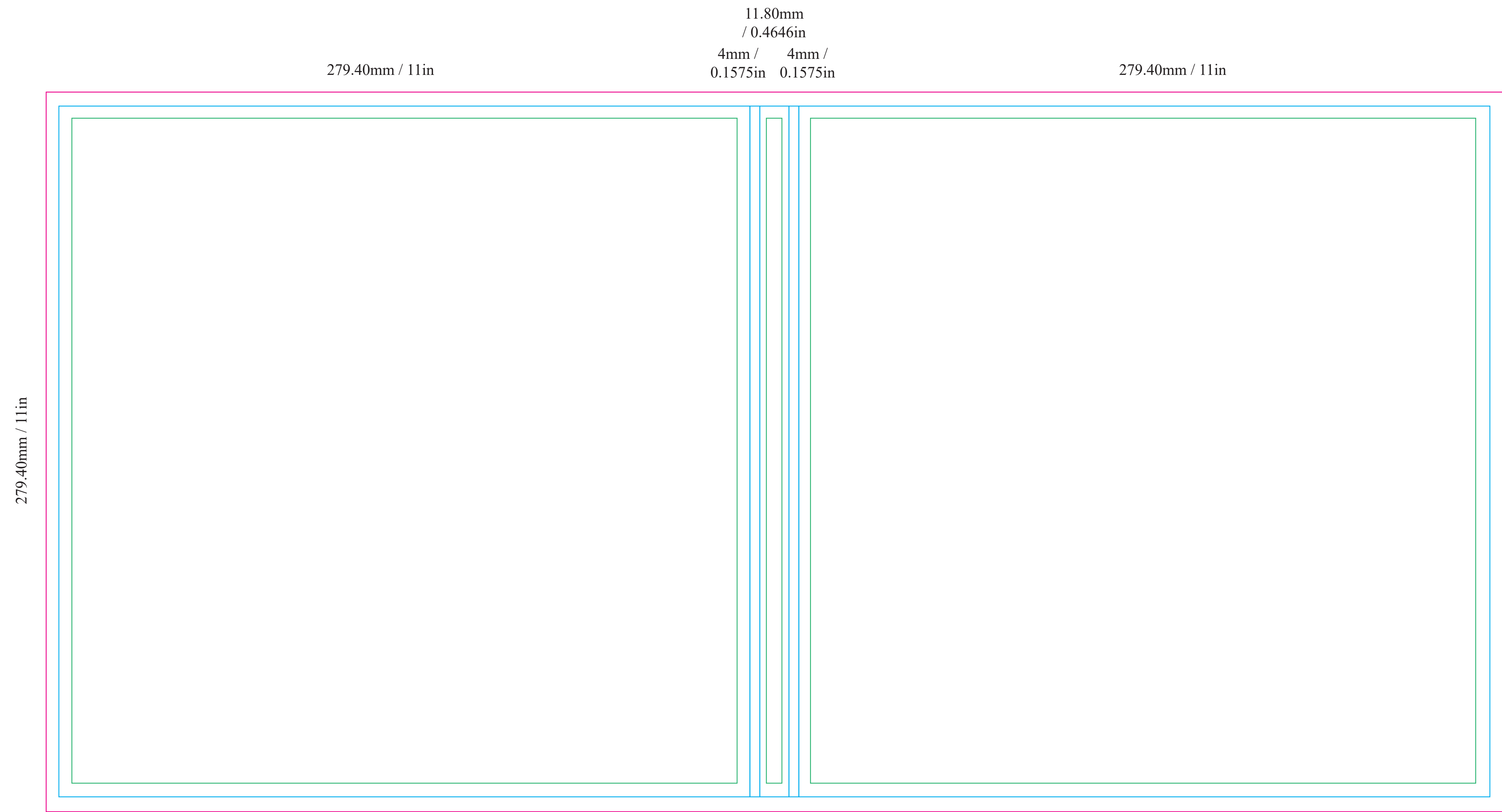
**File / Package**

1) The packaged file should include fonts and any placed imagery/links even if you embed them into the file.

2) Include Press-Quality PDFs, toggle through the layers and export each layer used as its own pdf.

3) Zip/Compress package file and submit for printing.

**i** ABOUT THIS TEMPLATE: Outside Hard Cover: 11in x 11in | Orientation: Square



**i** ABOUT THIS TEMPLATE: Screen Size: 10in | Video Panel Size: 11in x 10.6in

