

**TEMPLATE KEY:**

Art files should be submitted in CMYK with optional PMS colors.

Look on the "Layers" Panel to build your brochure correctly:

**■ Template/Dieline (build and orientation of brochure)**

Includes cuts and score area. Outer edges and screen will be cut, inner will be scored.

**■ Bleed (extra artwork overlay for cutting to edge)**

3.175mm / .125in bleed required around all edges with ink.

**■ Type Safety (build within space of boxes)**

3.175mm / .125in to 6.35mm / .25in recommended type-safety area to insure content does not get damaged.

**■ No Ink (found on the template/dieline layer)**

No artwork in this area.

**Artwork** (for designer to place client artwork)

**Spot UV** (optional vector overlay layer)

**Foil** (optional vector overlay layer)

**Emboss** (optional vector overlay layer)

**Deboss** (optional vector overlay layer)

**FINAL FILES:**

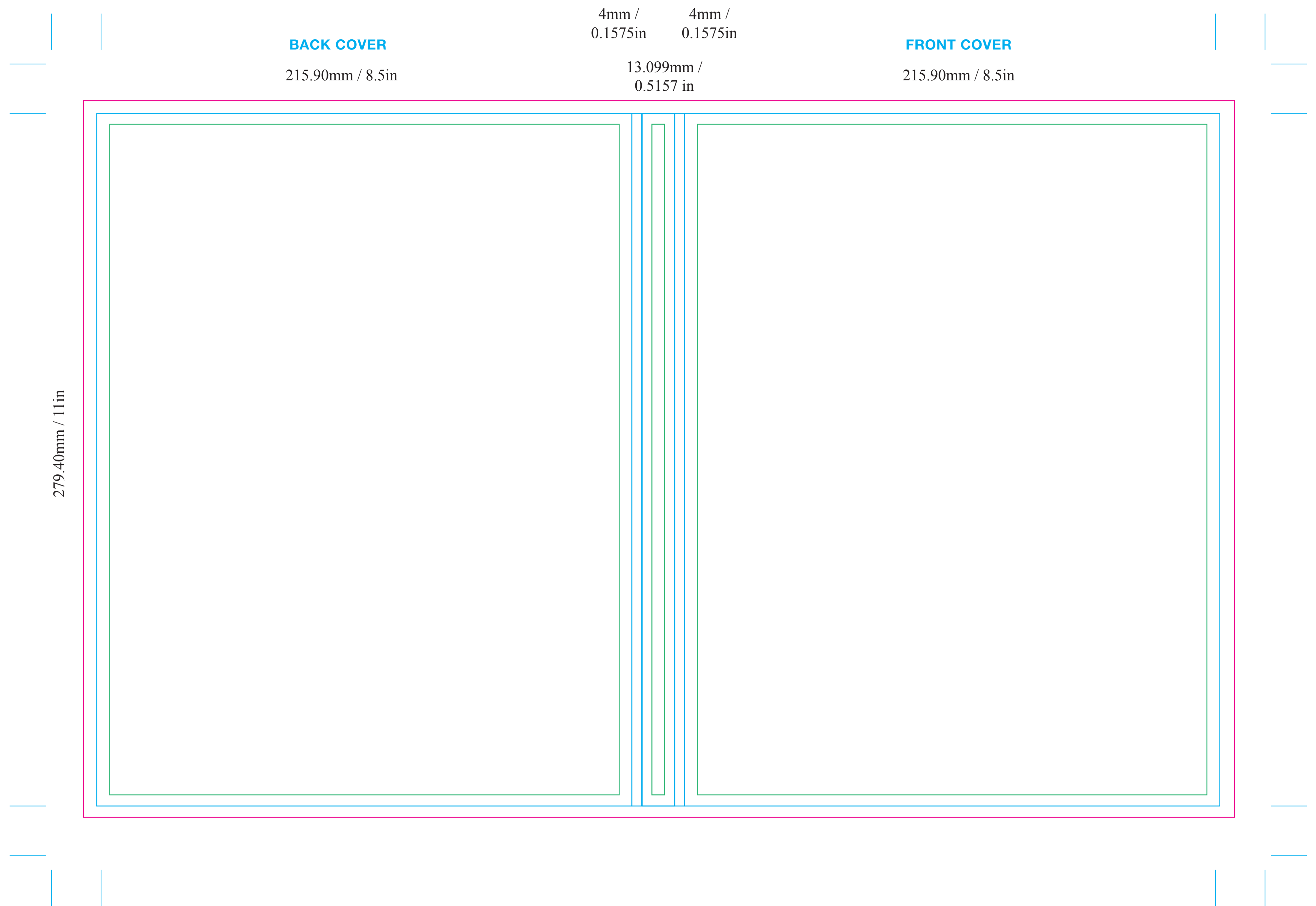
**File / Package**

1) The packaged file should include fonts and any placed imagery/links even if you embed them into the file.

2) Include Press-Quality PDFs, toggle through the layers and export each layer used as it's own pdf.

3) Zip/Compress package file and submit for printing.

**i ABOUT THIS TEMPLATE: Finished Size: 8.5in x 11in**



**i ABOUT THIS TEMPLATE: Screen Size: 7in | Brochure Size: 8.4in x 10.6in | Orientation: Portrait**

