

TEMPLATE KEY:

Art files should be submitted in CMYK with optional PMS colors.

Look on the "Layers" Panel to build your brochure correctly:

n Template/Dieline (build and orientation of brochure)

Includes cuts and score area. Outer edges and screen will be cut, inner will be scored.

n Bleed (extra artwork overlay for cutting to edge)

3.175mm / .125in bleed required around all edges with ink.

n Type Safety (build within space of boxes)

3.175mm / .125in to 6.35mm / .25in recommended type-safety area to insure content does not get damaged.

n No Ink (found on the template/dieline layer)

No artwork in this area.

Artwork (for designer to place client artwork)

Spot UV (optional vector overlay layer)

Foil (optional vector overlay layer)

Emboss (optional vector overlay layer)

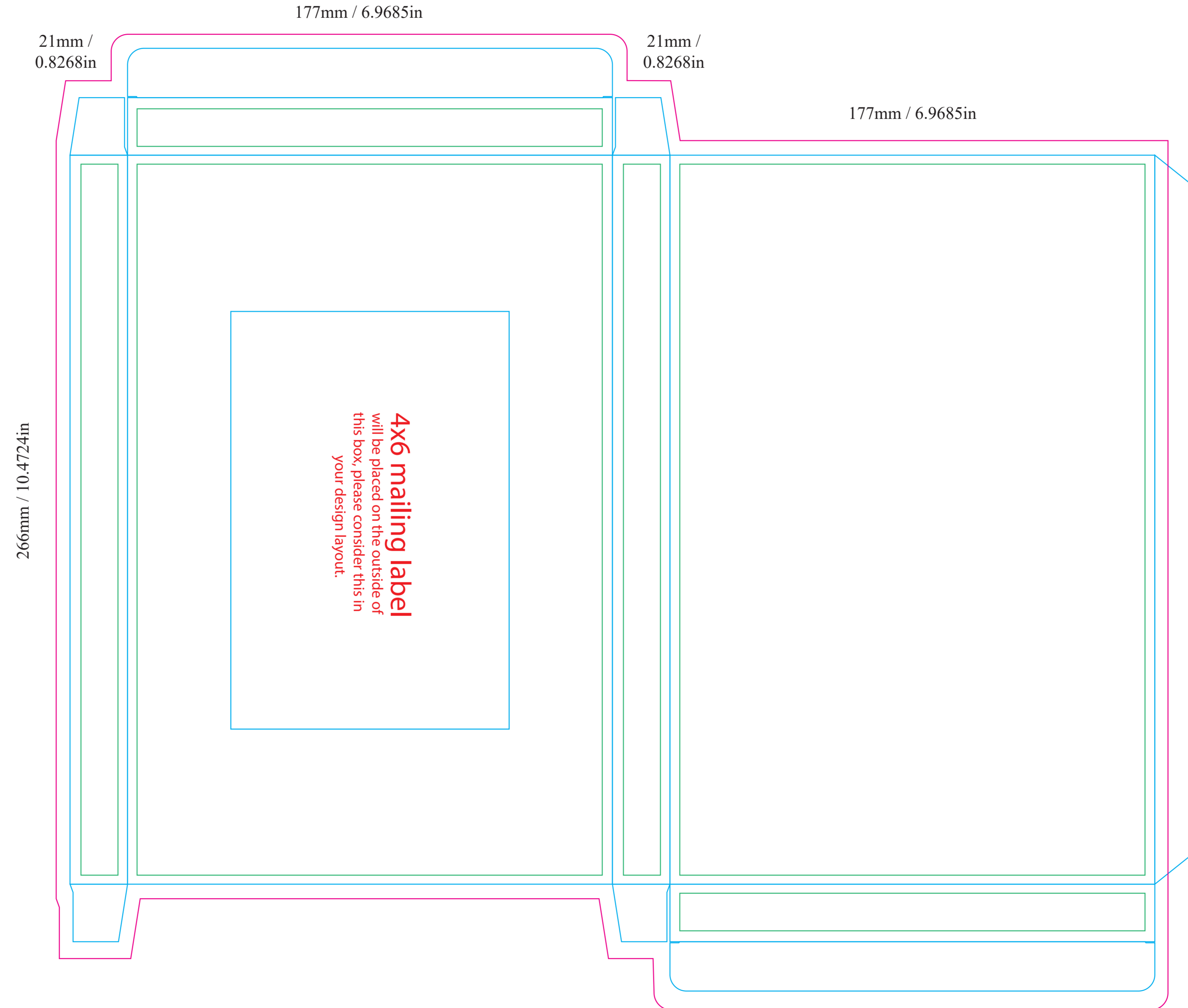
Deboss (optional vector overlay layer)

FINAL FILES:

File / Package

- 1) The packaged file should include fonts and any placed imagery/links even if you embed them into the file.
- 2) Include Press-Quality PDFs, toggle through the layers and export each layer used as it's own pdf.
- 3) Zip/Compress package file and submit for printing.

i ABOUT THIS TEMPLATE: Finished Size: 7in x 10.5in
Mailer Box Template for 6.5 x 9 Video Brochure



USB Cord Box Template

